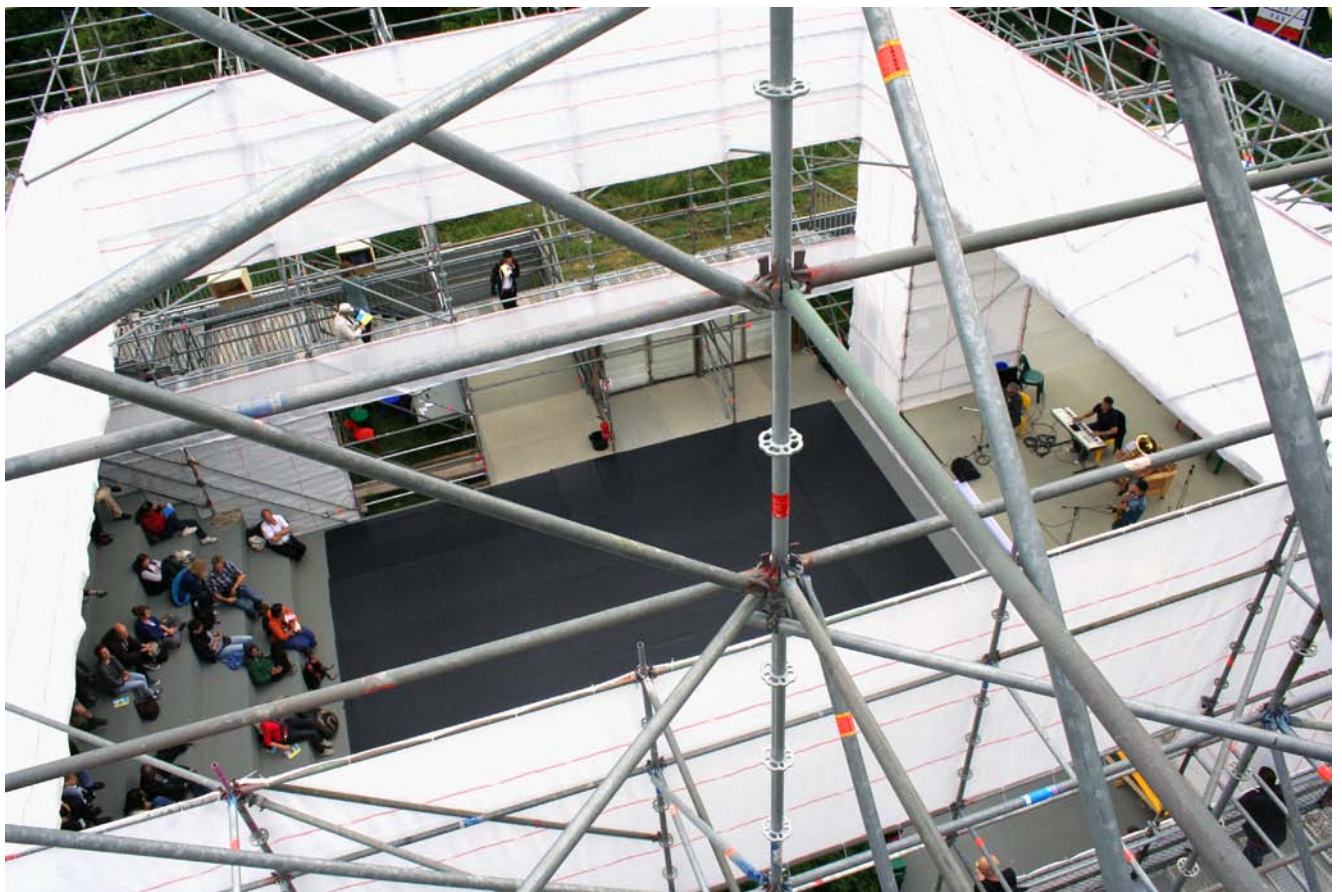


Arena im Junipark

team Andrea Hofmann, Christof Mayer
with Matteo Carli, Luna Catteeuw, Kai
Berthold, Hannah Müller, Lilli Unger
typ Temporäre Architektur
commissioned by Schlesische 27
time june 2014
fotos raumlaborberlin

Am Flutgraben 3
12435 Berlin
telefon +49 30 27580882
fax +49 30 2476319
internet www.raumlabor-berlin.de

raumlaborberlin



Junipark is part of the 'Wohnwut' campaign conducted by youth, art and culturehouse Schlesische27. The campaign finds its roots in a peer-to-peer survey concerning housing circumstances for youngsters in Berlin. This resulted in a publication being the main principle of the whole campaign. Junipark is a month-long youth/art festival that aims to translate these survey results, Berlins problemacy with affordable housing for youngsters, into a manifest by organising a space for discussions, workshops, performances and projects. At the end of the festival, these activities lead to the 'wohngut charta' in which the young participants formulate their concerns, ideas and proposals to Berlin politics.

To host these diverse activities, scaffolding elements are used for the rudimentary construction since they provide a maximum flexibility and allow the venue

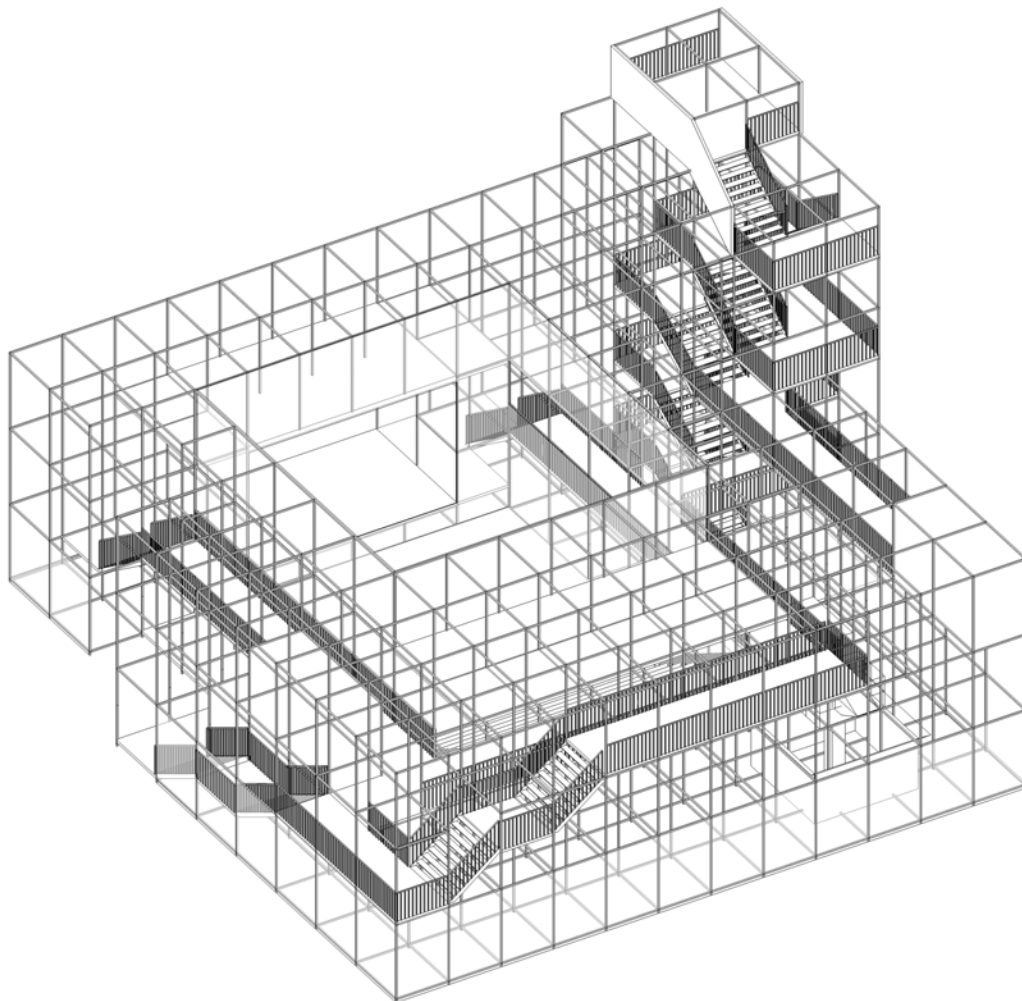
to become a foundation for a constantly changing content while also visualizing the campaign's program. The basic structure serves as a framework and has a high participative character by demanding a use and completion.

The Junipark is located on a former cemetery next to Tempelhofer Feld in Neukölln. In this rough and neglected but claimed context, we create a situation using basic architectural elements like court, tower, perron and a big window which we represent with minimal means.

The arena-shape creates an multi-usable inner court being the core of the structure. This is emphasized by the white scaffolding nets that distinguishes the court or scene from the rest of the construction. The core is completed with a tribune and a window to the

outside providing a stage. Functioning as a landmark and attraction point, the arena's tower gives visitors another viewpoint to Tempelhofer Feld, the surrounding houses and the former airport lamp posts.

Different projects move in the construction each creating space and giving the structure different characters. Except from performances and panel discussions, the program involves the surrounding neighborhood of the park. Neighbors are invited to cook and eat in the court and several workshops are organized making the Junipark also a temporary meeting place which can be used to make an analysis concerning the operation of this place as a catalyst for creating, strengthening a neighborhood. The temporary questions whether this will enable the neighborhood to self-initiate something and if it will have a prolonged effect.



Junipark is part of the 'Wohnwut' campaign conducted by youth, art and culturehouse Schlesische27. The campaign finds its roots in a peer-to-peer survey concerning housing circumstances for youngsters in Berlin. This resulted in a publication being the main principle of the whole campaign. Junipark is a month-long youth/art festival that aims to translate these survey results, Berlins problemacy with affordable housing for youngsters, into a manifest by organising a space for discussions, workshops, performances and projects. At the end of the festival, these activities lead to the 'wohngut charta' in which the young participants formulate their concerns, ideas and proposals to Berlin politics.

To host these diverse activities, scaffolding elements are used for the rudimentary construction since they provide a maximum flexibility and allow the venue

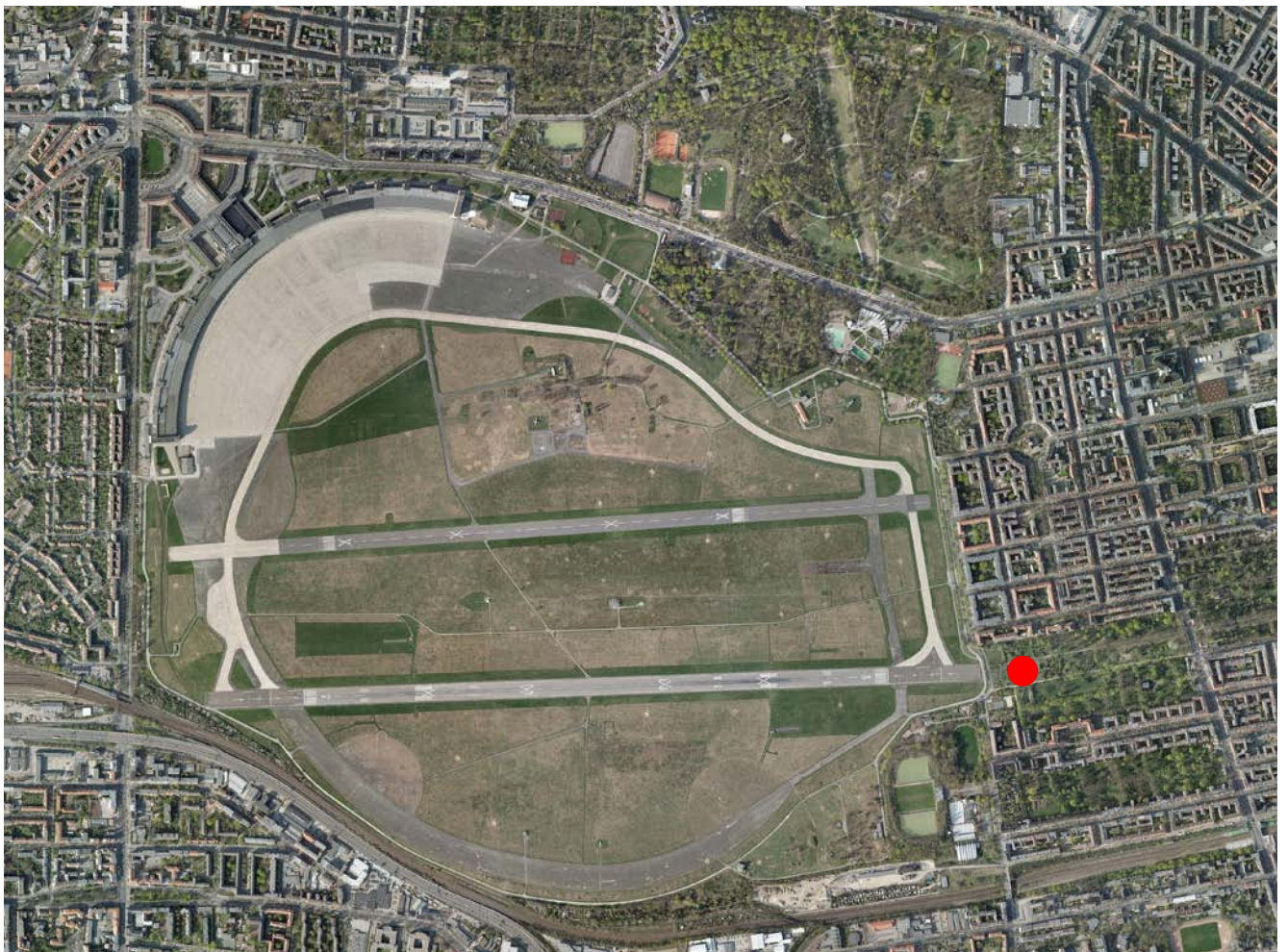
to become a foundation for a constantly changing content while also visualizing the campaign's program. The basic structure serves as a framework and has a high participative character by demanding a use and completion.

The Junipark is located on a former cemetery next to Tempelhofer Feld in Neukölln. In this rough and neglected but claimed context, we create a situation using basic architectural elements like court, tower, perron and a big window which we represent with minimal means.

The arena-shape creates an multi-usable inner court being the core of the structure. This is emphasized by the white scaffolding nets that distinguishes the court or scene from the rest of the construction. The core is completed with a tribune and a window to the

outside providing a stage. Functioning as a landmark and attraction point, the arenas tower gives visitors another viewpoint to Tempelhofer Feld, the surrounding houses and the former airport lamp posts.

Different projects move in the construction each creating space and giving the structure different characters. Except from performances and panel discussions, the program involves the surrounding neighborhood of the park. Neighbors are invited to cook and eat in the court and several workshops are organized making the Junipark also a temporary meeting place which can be used to make an analysis concerning the operation of this place as a catalyst for creating, strengthening a neighborhood. The temporary questions whether this will enable the neighborhood to self-initiate something and if it will have a prolonged effect.



Location of Junipark on the former St Thomas cemetery next to Tempelhofer Feld



Structure in former St-Thomas cemetery



The tower as a landmark/attraction point



View to runway tempelhofer feld



View to court from the balcony



Tribune in courtyard



Die Zwiefachen performing 'Nice to eat you' in the court



Band touring around in structure



Juniversal bar/ kitchen + crew



Temporary space shuffle



Neighborhood cooking in the courtyard

