

der generator

team Francesco Apuzzo,
Jan Liesegang, Frauke Gerstenberg
mit Lucia Pasquali
typ temporäre Architektur
zeit 2010
fotos raumlaborberlin

Am Flutgraben 3
12435 Berlin
telefon +49 30 27580882
fax +49 30 2476319
internet www.raumlabor-berlin.de

raumlaborberlin





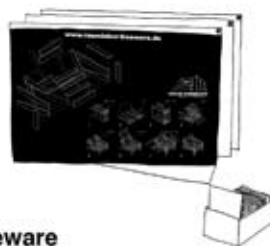
The Generator is an experimental building laboratory for instant, participatory building practice in public space. Construction principles, different

assemblage points, new geometries for furniture and lightweight construction buildings, as well as new possible uses and multiple

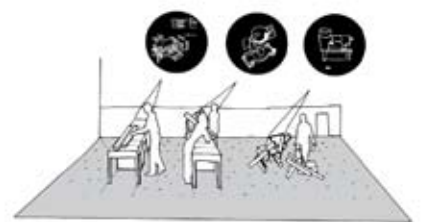
programs for people to meet and interact in public, are central issues of this research.



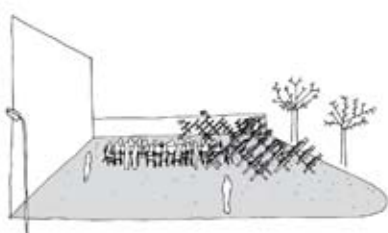
1. site



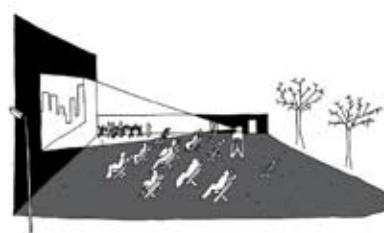
2. freeware



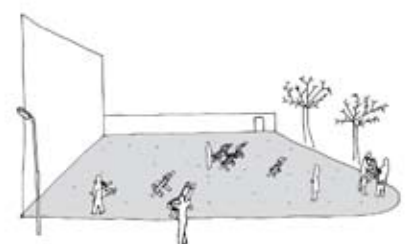
3. generator



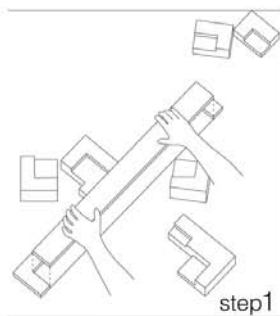
4. shelter



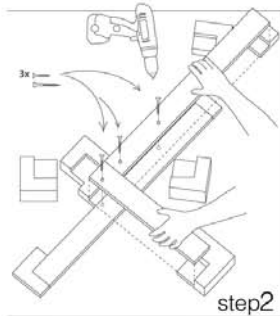
5. multiplicity



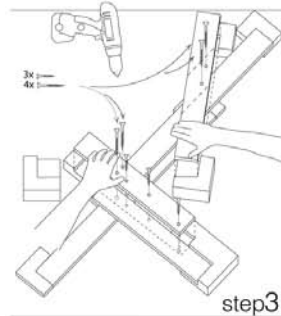
6. takeaway



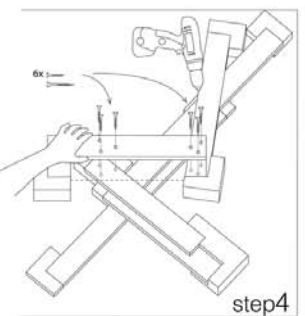
step1



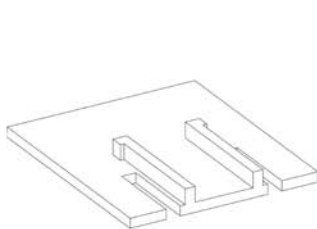
step2



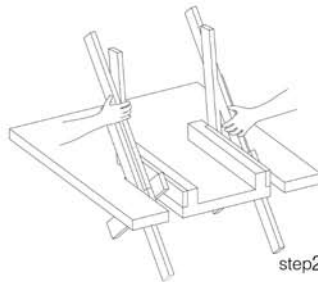
step3



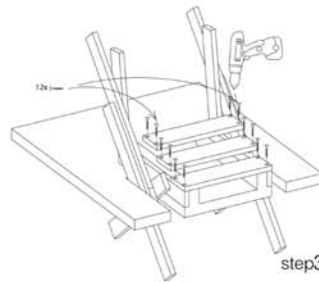
step4



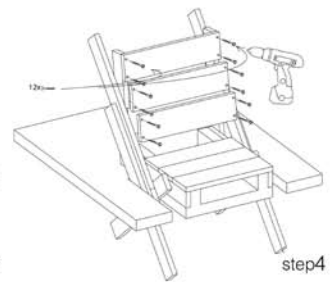
step1



step2



step3



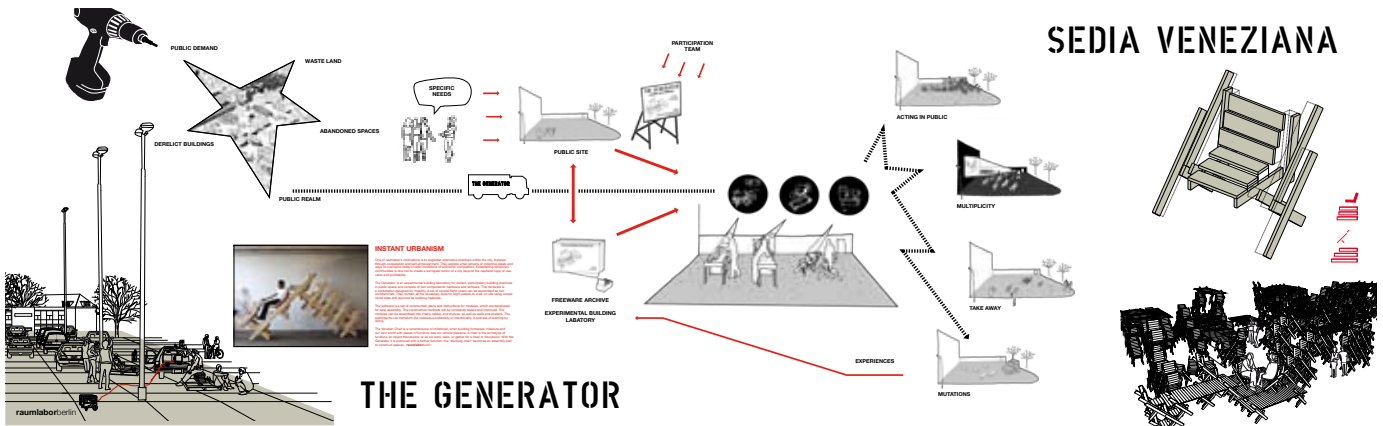
step4

The Generator consists of two components: hardware and software. The hardware is a workstation designed to be mobile. A set of several flight cases can be assembled as two workbenches. They contain all the necessary tools for eight people to work on site using simple wood slats

and plywood as building materials. The software is a set of construction plans and instructions for modules, which are developed to be assembled easily. The construction methods will be constantly tested and improved. The modules can be assembled to chairs, tables, shelves, but also to walls and

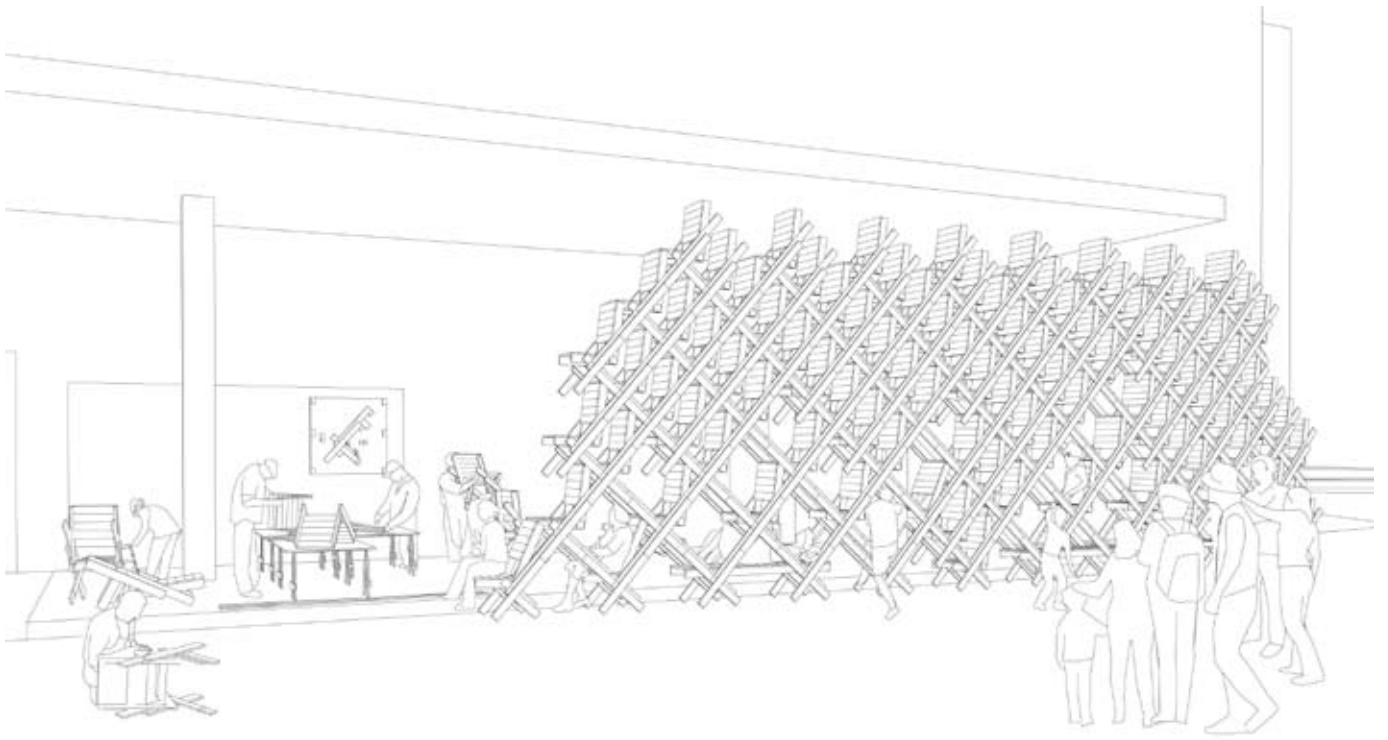
shelters. The participants can transform the modules by accident or intentionally. A process of learning by doing. The team will record and reuse all possible mutations of the system and incorporate them in a growing structure.





At the BIENNALE DI ARCHITETTURA, VENICE the software SEDIA VENEZANA was introduced and tested.





WORKSHOP



The Venetian Chair is a reminiscence of childhood, when building fortresses, hideouts and our own world with pieces of furniture was our most pleasure. A chair is the archetype of furniture, an object that assists us to work, to relax, to come together for a meal or a discussion. With the generator it receives a further function: the “stacking chair” becomes an assembly part to build spaces.



team workshop: Andrew Plucinski, Manfred Eccli, Lucas Fink, Armin Fuchs, Paula Hentschel, Paolo Ruaro, Andreas Krauth, Annamaria Piccinini, Francesco Vedovato, Manuel Coletto, Ewa Rudnicka, Roberta Aralla, Camilla Minini, Marella Diamantini, Anna Francesca Triboli

